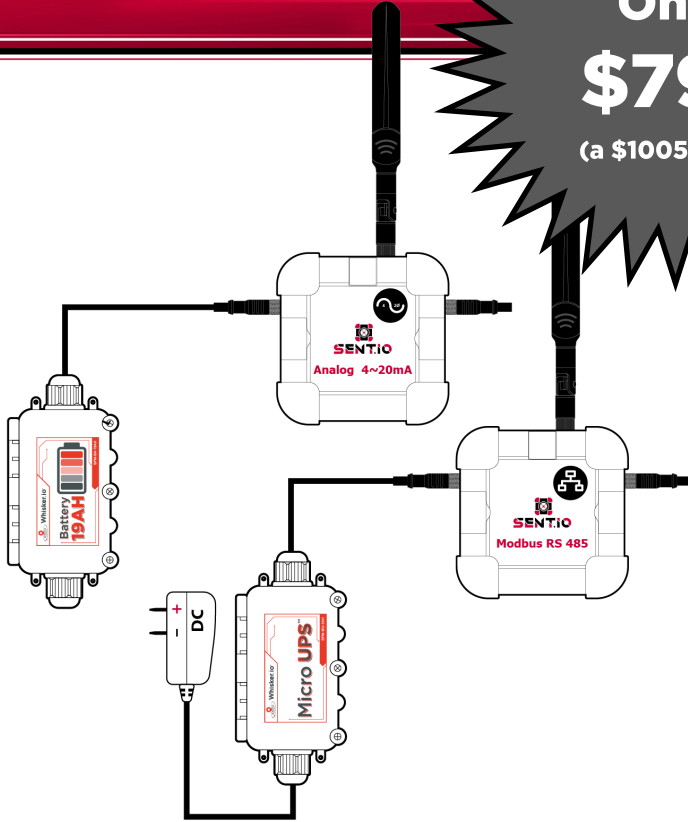


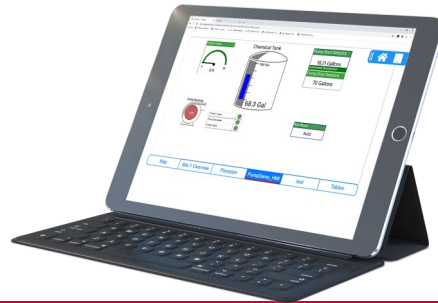
# Starter Kit Basic

Only  
**\$795**  
(a \$1005 value)



## Includes

- Qty. 1 - Modbus RTU Sent.io™
- Qty. 1 - 2xAnalog (4-20mA) Sent.io™
- Qty. 1 - SPM-BA-19AH Battery Pack
- Qty. 1 - SPM-MU-3AH MicroUPS
- Qty. 2 - 4G Cat M1 Antennas



## Overview

The Sent.io™ Basic Starter Kit gives you everything you need to start working with Sent.io™ today. Sent.io™ works with our award winning Whisker.io® cloud platform

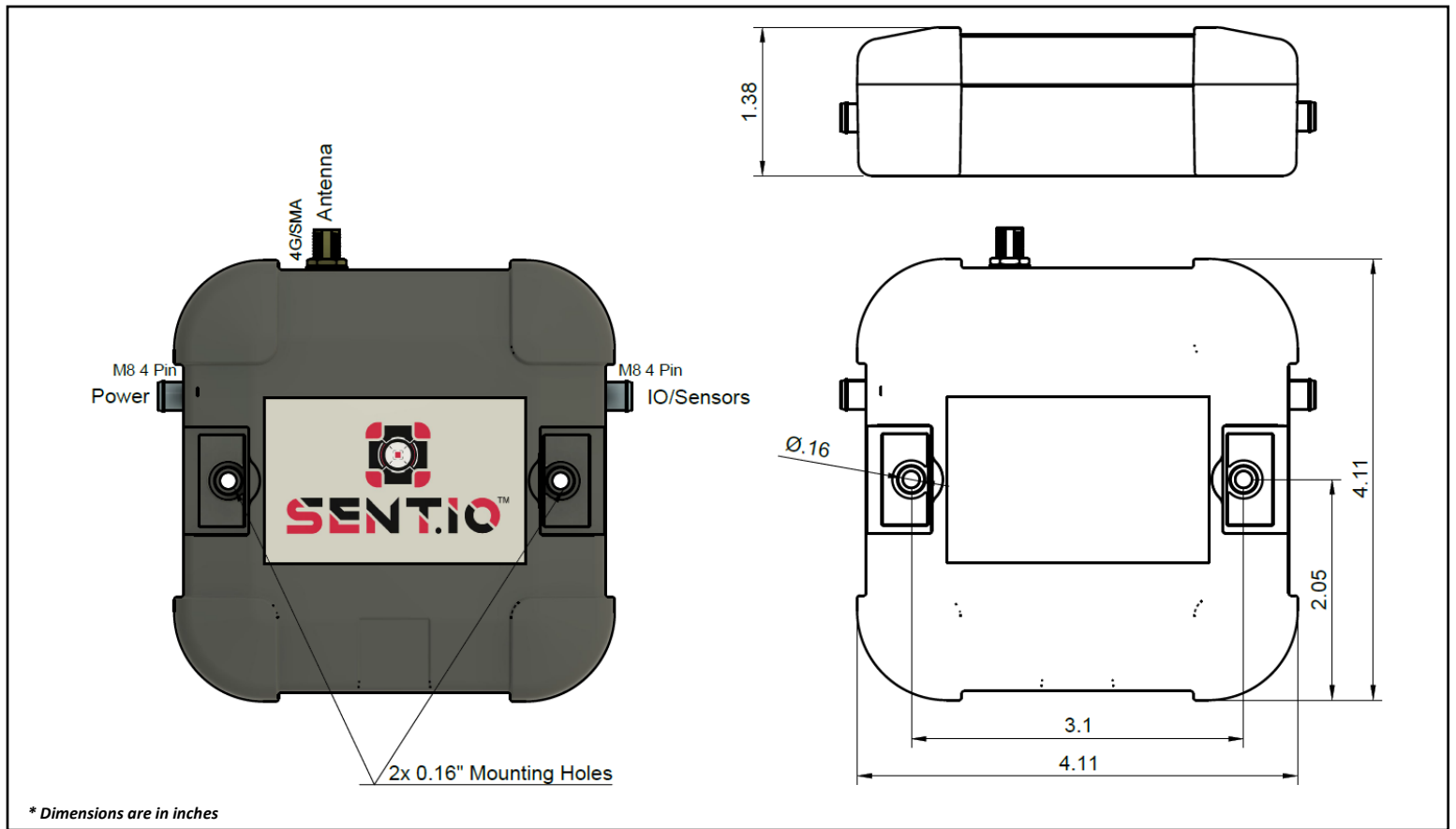
The Modbus RTU Sent.io comes with our MicroUPS battery backed up power supply and can be used to connect any 3rd party automation technology to the Whisker.io® cloud. Connect it to a PLC and with just a few minutes of configuration, you can use your mobile phone to remotely monitor and manage the PLC via Modbus tags to control pump run status, reset alarms, monitor error codes and tank levels, change setpoints. We call this technology **LivePLC™** and we promise there is no faster way to get your turn your PLC into an IIoT solution in the world.

The Analog Sent.io™ has two 4-20mA inputs and comes with a 19AH battery that will power the device for 8 years. For example, connect a pressure transducer and you have a low cost, standalone tank level monitoring solution. It works with any 4-20mA sensor and provides sensor power directly, making it a truly wireless solution.

## Ordering Info

| Part Number | Description                           |
|-------------|---------------------------------------|
| SIO-SK-B01  | Basic Sent.io™ Industrial Starter Kit |

# Mechanical Drawings



## Key Specifications

| Parameter                               | Minimum | Typical | Maximum | Units              |
|---|---------|---------|---------|--------------------|
| Operating Temp. Range                   | -40     |         | +85     | °C                 |
| Analog Input Range                      | 4       |         | 20      | mA                 |
| Power Supply (External DC Power Option) | 8       |         | 32      | VDC                |
| Battery Life (Battery Power Option)     | 2       | 8       | 10      | Years <sup>1</sup> |
| Battery Backup (MicroUPS Power Option)  |         | 48      |         | Hours <sup>1</sup> |
| Power Supply Current—Average            |         | 50      |         | mA                 |
| Power Supply Current—Peak               |         | 1       |         | A <sup>2</sup>     |
| Modbus Baud Rate                        | 9600    |         | 115200  | But/sec            |

- Notes:
1. Depends on installed sensors and operating environment
  2. Peak current at 3.6V.